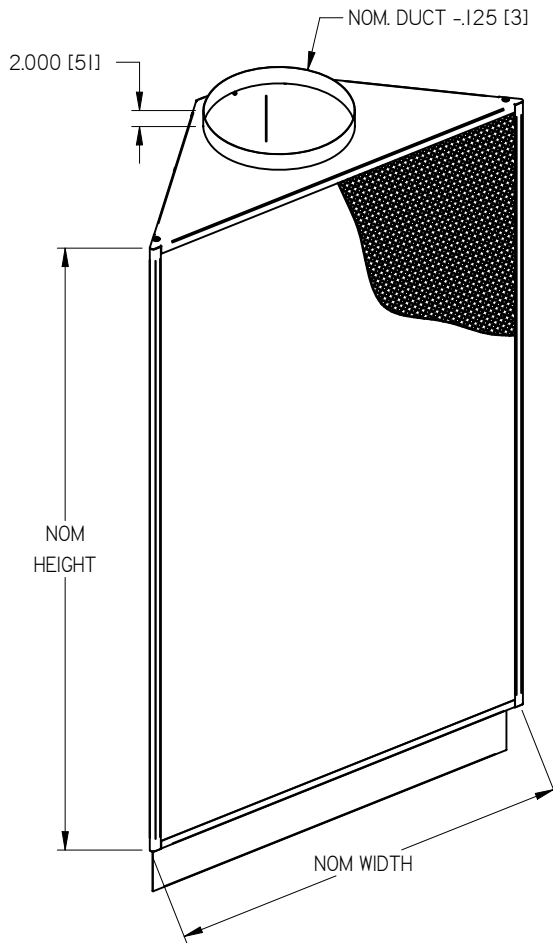
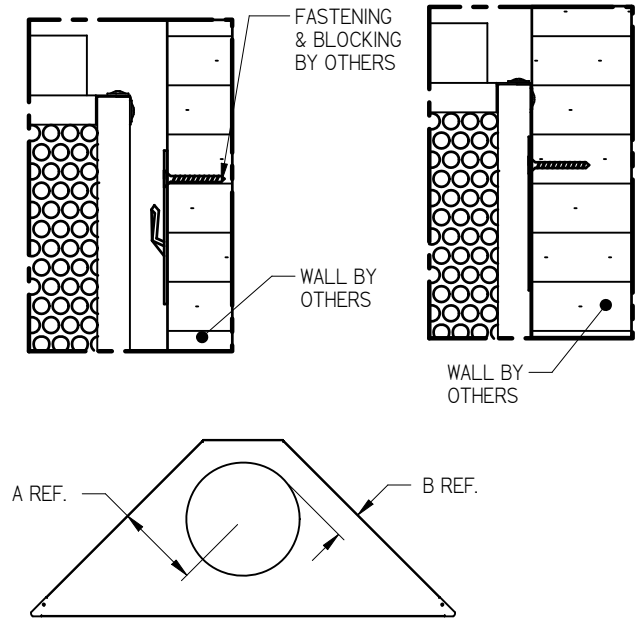


DF1C FLOOR RECTANGULAR CORNER DISPLACEMENT DIFFUSER



SURFACE MOUNT DETAIL
SLIDE PLENUM ONTO WALL MOUNT PLATE



OPTIONAL ACCESSORIES:

- BASE SEE SUBMITTAL 243660
- DUCT COVER SEE SUBMITTAL 243660
- NO INLET OPTION SEE SUBMITTAL 255600

DIFFUSER:

STANDARD MATERIAL

- PERFORATED FRONT PANEL - 16 GA. STEEL
- SIDE, TOP AND BOTTOM PANELS - 20 GA STEEL
- FRAME - ALUMINUM

FINISH:

- DIFFUSER - B12 WHITE
- (OPTIONAL FINISHES AVAILABLE)

NOTE:

- FACTORY TOLERANCE +/- .031" (1)
- ALL UNITS COME WITH INTERNAL BAFFLE
- SEE INSTALLATION MANUAL I100008

NOMINAL SIZE				
METRIC				
W x H	DUCT	INLET LOCATION	A	B
24 x 24 (610 x 610)	8 (204)	TOP / BOT	4.596	0.659
24 x 36 (610 x 915)	8 (204)	TOP / BOT	4.596	0.659
24 x 48 (610 x 1219)	8 (204)	TOP / BOT	4.596	0.659
24 x 60 (610 x 1525)	8 (204)	TOP / BOT	4.596	0.659
24 x 72 (610 x 1829)	8 (204)	TOP / BOT	4.596	0.659
30 x 24 (762 x 610)	8 (204)	TOP / BOT	5.834	1.896
	10 (254)	TOP / BOT	5.834	0.896
30 x 36 (762 x 915)	8 (204)	TOP / BOT	5.834	1.896
	10 (254)	TOP / BOT	5.834	0.896
30 x 48 (762 x 1219)	10 (254)	TOP / BOT	5.834	0.896
30 x 60 (762 x 1525)	10 (254)	TOP / BOT	5.834	0.896
30 x 72 (762 x 1829)	10 (254)	TOP / BOT	5.834	0.896
36 x 24 (915 x 610)	8 (204)	TOP / BOT	6.718	2.780
	10 (254)	TOP / BOT	6.718	1.780
	12 (305)	TOP / BOT	6.718	0.780
36 x 36 (915 x 915)	12 (305)	TOP / BOT	6.718	0.780
36 x 48 (915 x 1219)	12 (305)	TOP / BOT	6.718	0.780
36 x 60 (915 x 1525)	12 (305)	TOP / BOT	6.718	0.780
36 x 72 (915 x 1829)	12 (305)	TOP / BOT	6.718	0.780

ALL METRIC DIMENSIONS () ARE SOFT CONVERTED. IMPERIAL DIMENSIONS ARE CONVERTED TO METRIC AND ROUNDED TO THE NEAREST MILLIMETER.


PROJECT:

ENGINEER:

CUSTOMER:

SUBMITTAL DATE:

SPEC. SYMBOL:

PRICE	
	DF1C FLOOR MOUNTED RECTANGULAR CORNER DISPLACEMENT DIFFUSER W/ OPTIONAL BASE & COVER
243659	
SEPT 2010	